

PAULIST CENTER BOSTON

TWENTY-FIRST SUNDAY IN ORDINARY TIME

August 24, 2025 | 10 am

Gathering Song

As We Gather at Your Table

Holy Manna

1. As we gath - er at your ta - ble,
2. Turn our wor - ship in - to wit - ness
3. Gra - cious Spir - it, help us sum - mon

As we lis - ten to your word,
In the sac - ra - ment of life;
Oth - er guests to share that feast

Help us know, O God, your pres - ence;
Send us forth to love and serve you,
Where tri - um - phant Love will wel - come

Let our hearts and minds be stirred. Nour - ish us with
Bring - ing peace where there is strife. Give us, Christ, your
Those who had been last and least. There no more will

sa - cred sto - ry Till we claim it as our own;
great com - pas - sion To for - give as you for - gave;
en - vy blind us, Nor will pride our peace de - stroy,

Teach us through this ho - ly ban - quet
May we still be - hold your im - age
As we join with saints and an - gels

How to make Love's vic - t'ry known.
In the world you died to save.
To re - peat the sound - ing joy.

Text: Carl P. Daw, Jr., b.1944, © 1989, Hope Publishing Company
Tune: HOLY MANNA, 8 7 8 7 D; William Moore, fl.1830; acc. by Kelly Dobbs Mickus, b.1966

Glory to God

Mass of Christ, Light of the Nations
Tony Alonso

Collect

THE LITURGY OF THE WORD

First Reading

Isaiah 66:18-21

Responsorial Psalm

Psalm 40

R. Go out to all the world, and teall the good news.

Second Reading

Hebrews 12:5-7, 11-13

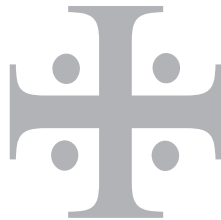
Gospel Acclamation

R. Alleluia, alleluia, alleluia, alleluia. (2X)

Gospel

Luke 13:22-20

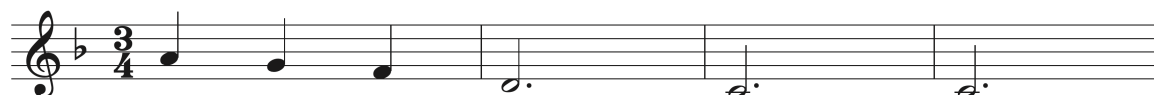
Homily



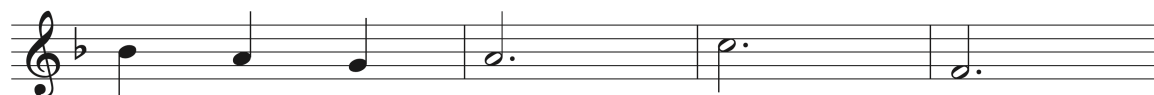
Preparation of the Altar and Gifts

Open My Eyes

Jesse Manibusan



1. O - pen my eyes, Lord. _____
2. O - pen my ears, Lord. _____
3. O - pen my heart, Lord. _____
4. I live with - in you. _____



Help me to see your face.
Help me to hear your voice.
Help me to love like you.
Deep in your heart, O Love.



O - pen my eyes, Lord.
O - pen my ears, Lord.
O - pen my heart, Lord.
I live with - in you.



Help me to see. _____
Help me to hear. _____
Help me to love. _____
Rest now in me. _____

THE LITURGY OF THE EUCHARIST

Holy, Holy, Holy

Mass of Creation
Marty Haugen

4

Ho-ly, Ho-ly, Ho-ly Lord God of

hosts. Heav-en and earth are full of your glo-ry.

Ho-san-na in the high-est. Bless-ed is he who

comes in the name of the Lord. Ho-san-na in the

high-est. Ho-san-na in the high-est.

Text: ICEL, © 2010
Music: *Mass of Creation*, Marty Haugen, © 1984, 1985, 2010, GIA Publications, Inc.

Mystery of Faith

Mass of Creation
Marty Haugen

When we eat this Bread and drink this Cup, we pro -
claim your Death, O Lord, un - til you come a - gain.

The musical notation is in G major (one flat) and 4/4 time. It consists of two staves. The first staff has a treble clef and a key signature of one flat. The melody is: G4 (quarter), A4 (quarter), B4 (quarter), C5 (quarter), B4 (quarter), A4 (quarter), G4 (quarter), F#4 (quarter), E4 (half). The second staff continues the melody: D4 (half), C4 (half), B3 (quarter), A3 (quarter), G3 (quarter), F#3 (quarter), E3 (half), D3 (half). The piece ends with a double bar line.

Text: ICEL, © 2010

Music: *Mass of Creation*, Marty Haugen, © 1984, 1985, 2010, GIA Publications, Inc.

Amen

Mass of Creation
Marty Haugen

A - men, a - men, a - men!

The musical notation is in G major (one flat) and 4/4 time. It consists of a single staff with a treble clef. The melody is: G4 (quarter), A4 (quarter), B4 (quarter), C5 (quarter), B4 (quarter), A4 (quarter), G4 (quarter), F#4 (quarter), E4 (half), D4 (half). The piece ends with a double bar line.

Music: *Mass of Creation*, Marty Haugen, © 1984, 1985, GIA Publications, Inc.

Lamb of God

Mass of Creation
Marty Haugen

Cantor: Lamb of God, *Assembly:* you take a-way the sins of the
To repeat world, have mer - cy on us.
Last time world, grant us peace.

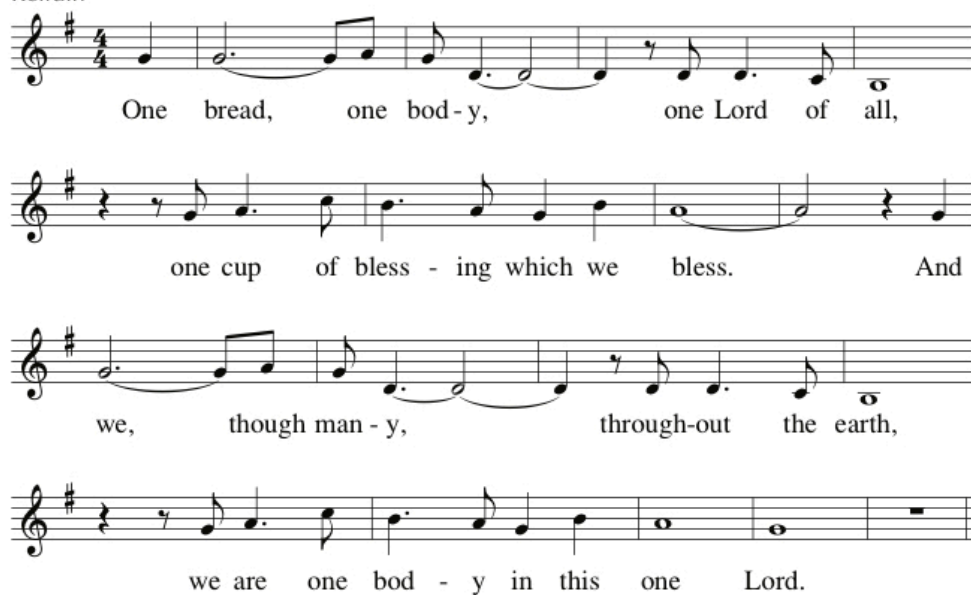
The musical notation is in G major (one flat) and 4/4 time. It consists of three staves. The first staff is for the Cantor and Assembly. The Cantor's part is: G4 (quarter), A4 (quarter), B4 (quarter), C5 (quarter), B4 (quarter), A4 (quarter), G4 (quarter), F#4 (quarter), E4 (half), D4 (half). The Assembly's part is: G4 (quarter), A4 (quarter), B4 (quarter), C5 (quarter), B4 (quarter), A4 (quarter), G4 (quarter), F#4 (quarter), E4 (half), D4 (half). The second staff is for the 'To repeat' section. The melody is: G4 (quarter), A4 (quarter), B4 (quarter), C5 (quarter), B4 (quarter), A4 (quarter), G4 (quarter), F#4 (quarter), E4 (half), D4 (half). The third staff is for the 'Last time' section. The melody is: G4 (quarter), A4 (quarter), B4 (quarter), C5 (quarter), B4 (quarter), A4 (quarter), G4 (quarter), F#4 (quarter), E4 (half), D4 (half). The piece ends with a double bar line.

Music: *Mass of Creation*, Marty Haugen, © 1984, 1985, 2010, GIA Publications, Inc.

Communion Song

One Bread, One Body John Foley

Refrain



One bread, one bod - y, one Lord of all,
one cup of bless - ing which we bless. And
we, though man - y, through-out the earth,
we are one bod - y in this one Lord.

Verses



1. Gen - tile or Jew, ser - vant or free,
2. Man - y the gifts, man - y the works,
3. Grain for the fields, scat-tered and grown,
wom - an or man no more.
one in the Lord of all.
gath - ered to one for all.

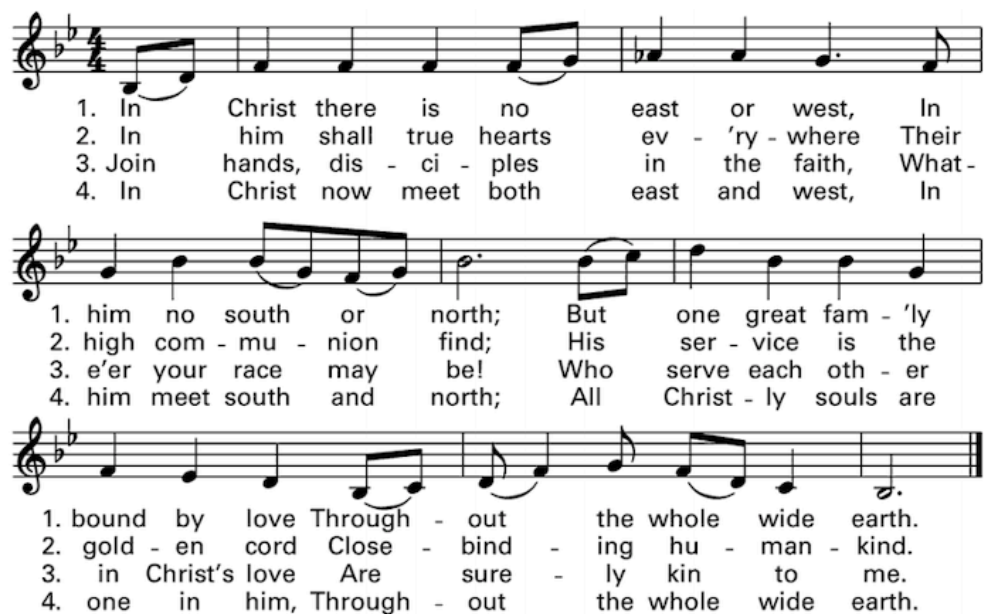
Text: 1 Corinthians 10:16; 17, 12:4; Galatians 3:28; the *Didache* 9; John Foley, SJ, b.1939
Tune: John Foley, SJ, b.1939
© 1978, John B. Foley, SJ, and OCP

Final Blessing and Dismissal

Sending Forth

In Christ There Is No East or West

McKee



1. In Christ there is no east or west, In
2. In him shall true hearts ev - 'ry - where Their
3. Join hands, dis - ci - ples in the faith, What -
4. In Christ now meet both east and west, In

1. him no south or north; But one great fam - 'ly
2. high com - mu - nion find; His ser - vice is the
3. e'er your race may be! Who serve each oth - er
4. him meet south and north; All Christ - ly souls are

1. bound by love Through - out the whole wide earth.
2. gold - en cord Close - bind - ing hu - man - kind.
3. in Christ's love Are sure - ly kin to me.
4. one in him, Through - out the whole wide earth.

Text: CM; Galatians 3:28; John Oxenham, 1852–1941. Music: Spiritual; adapted by Harry T. Burleigh, 1866–1949.

